



केवल मूल्यांकनकर्ता के उपयोग हेतु!

माध्यमिक शिक्षा मण्डल, मध्यप्रदेश, भोपाल

32 पृष्ठीय

केवल परीक्षक द्वारा भरा जावे। प्रश्न क्रमांक के समुख प्राप्तांकों की प्रविष्टी करे।

प्रश्न क्रमांक	पृष्ठ क्रमांक	प्रश्न क्रमांक	पृष्ठ क्रमांक	प्राप्तांक (अंकों में)
1		17		
2		18		
3		19		
4		20		
5		21		
6		22		
7		23		
8		24		
9		25		
10		26		
11		27		
12		28		
13				
14				
15				
16				

कल प्राप्तांक अंकों में

परीक्षक एवं उपमुख्य परीक्षक द्वारा भरा जावे।

प्रमाणित किया जाता है कि अन्दर के पृष्ठों के अनुरूप मुख्य पृष्ठ पर अंकों की प्रविष्टी एवं अंकों का योग सही है।

निर्धारित मुद्रा : नाम, पदनाम, मोबाईल नम्बर, परीक्षक क्रमांक एवं पदांकित संस्था के नाम की मुद्रा लगाएं।

उप मुख्य परीक्षक के हस्ताक्षर एवं निर्धारित मुद्रा

ज्योति श्रीवास्तव

UJ-181

9424001155

परीक्षक एवं उपमुख्य परीक्षक द्वारा भरा जावे



प्रश्न क्र. 1

Question no = 1.

Choose the correct answer.

Answers of Question no 1.

B
S
E

(i) ~~Mitochondria (b)~~

(ii) ~~Synapse (b)~~

(iii) ~~Displacement Reaction (d)~~

(iv) ~~Antacid (c)~~

(v) ~~Applying coating of zinc (c)~~

(vi) ~~ketone (c)~~



प्रश्न क्र 2

Question of no 2.Fill in Blanks.Answer of Question no. 2(i) ~~Blue~~(ii) ~~kw-h (kilowatt-hour)~~ Watt(iii) ~~Voltmeter~~(iv) ~~increases~~ zero falls to zero.(v) ~~environmental problems~~

25 cm.

B
S
E



प्रश्न क्र. 3

Question no = 3True falseAnswer of Question no = 3(i) ~~True~~(ii) ~~False~~(iii) ~~False~~(iv) ~~True~~(v) ~~False~~(vi) ~~True~~B
S
E



प्रश्न क्र. 4:

Question no. 4.

Match the column

Answer of Question no. 4.

B
S
E

(A)

(B)

(i) Bromine

~~liquid non metal~~

(ii) Benzene

~~C₆H₆~~

(iii) Pair of sex chromosomes

~~XY~~

(iv) Insulin

~~Regulates blood sugar level~~

(v) Marble

~~CaCO₃~~

(vi) Vinegar

~~Acetic acid~~

$10 + 10 = 20$

6



प्रश्न क्र. 5

Question no - 5.

One word answer

Answer of Question no. 5.

Ans = i Commercial Unit of Electrical Energy = kw-h

Ans = (ii) M.R.I = Magnetic Resonance Imaging

Ans = (iii) Blood pressure = The pressure that the blood exerts on the walls of vessels (Arteries or Veins) is called Blood Pressure. It is measured by an instrument called Sphygmomanometer.

Ans = (iv) Gibberelins is plant hormone helps in Growth of stem.

Ans = (v) Gregor John Mendel

Ans = (vi) The Danger signal light are red in colour, for the because the red colour light scatter least

B
S
E



प्रश्न क्र.

by the small molecules of air and remain
 a point appears to the person from far.
 Hence, Red is used as Danger signal light.

B
S
E

Question no-6

Answer of Question no.6

Ans 6 = "Embryo gets nourishment inside the mother body
 through a special tissue Placenta."

Placenta tissue is helpful in transfer or
 to "provide nourishment to Embryo" from
 the mother's blood.

Placenta also helpfull in transfer of
Excrete materials of Embryo into mother's blood.



प्रश्न क्र. 7

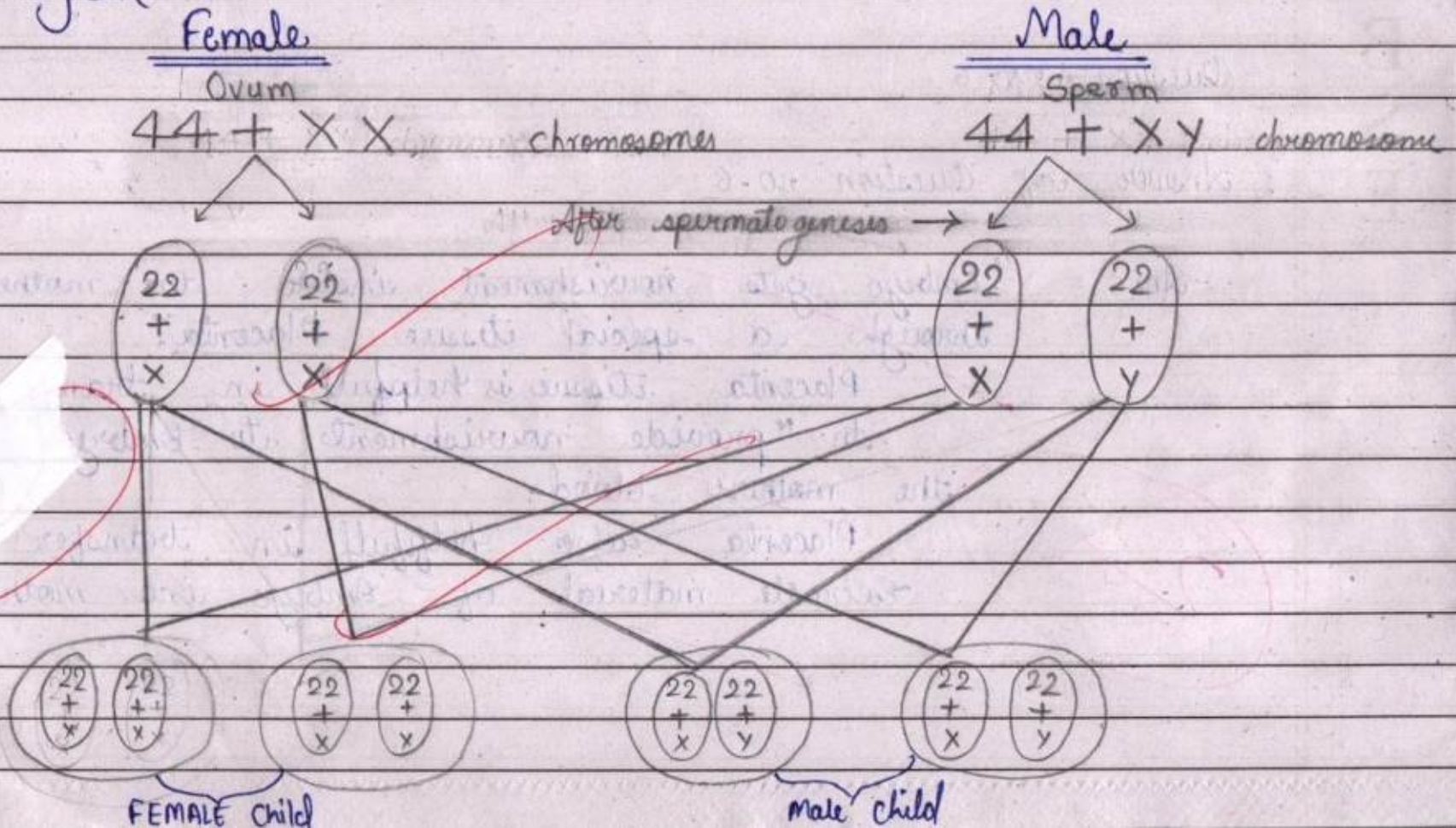
Question no. 7.

Answer of Question no 7.

Sex determination in human beings

Diagram

B
S
E



$32 + 2 = 34$



प्रश्न क्र.

In this diagram we conclude that,

If child having XX chromosomes - is a girl child

If child having XY chromosomes = male child.

B
S
E

Question no 8

Answer of Question no. 8.

Laws of Reflection of Light =

(1) The incident ray, the reflected ray and the normal at the points of incidence all lie on same plane.

(2) The angle of incidence is equal to angle of reflection. $\angle i = \angle r$.



प्रश्न क्र. 9

Question no - 9

"OR"

Answer of Question no 9.1 dioptre of Power of lens.

Ans = 9

Dioptre is the unit of power of lens.

"1 Dioptre is the power of lens of focal length 1 metre (m)"B
S
E

Continue ...

30 + 2 = 30



प्रश्न क्र. 10

Question no = 10

Answer of Question no-10.

Sky appear dark to an astronaut

B
S
E

Sky appears in blue due to the "scattering of light". Sky appears dark to an astronaut, because there is no atmosphere outside, in the space, so no light scattered from the particles, and due to this no scattered light reaches to astronaut's eyes. Thus, sky appears him dark.

P.T.O.



प्रश्न क्र. 11

Question no 11

"OR"

Answer of Question no 11.

Ans: Resistance of a conductor depends upon following factors -

(1) length of conductor = The resistance of a conductor depends upon length of conductor. The resistance of conductor is directly proportional to its length.
i.e. $R \propto l$

(2) Area of cross section = Resistance of conductor is inversely proportional to the area of cross section

$$R \propto \frac{1}{A}$$

(3) Resistance also depend upon temperature and nature of metal, conductor made from.

B
S
E

www.oddyindia.com



प्रश्न क्र. 12

Question no -12

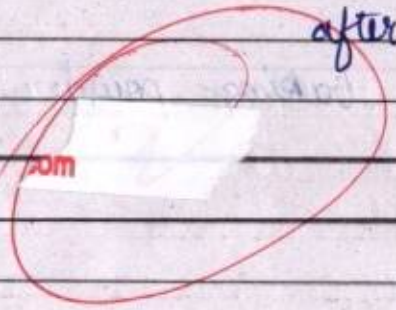
Answer of Question no 12

Ans=12

Acid and sour substance not to be kept in brass and copper vessels, because these food stuffs contain acids that react with the metal of vessel and make poisonous food substances, that can cause food poisoning.

The acid and sour substance become unhealthy after keeping in brass and copper vessels.

B
S
E



P.T.O.



प्रश्न क्र. 13

Question no-13.

"OR"

Answer of Question no 13.B
S
EAns. Uses of Baking Soda :- [NaHCO_3]

- (1) Baking Soda is used as antacid.
- (2) Baking Soda is used as soda-fire extinguishers.
- (3) It is used to make baking powder.



प्रश्न क्र. 14

Question no - 14

"OR"

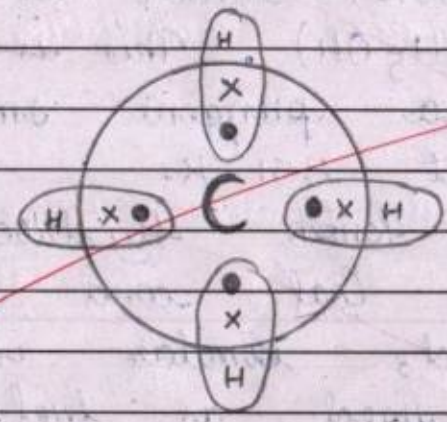
Answer of Question no - 14

B
S
E

Electron dot structure of Methane. CH_4

Ans.

Methane.





प्रश्न क्र. 15

Question no 15.

"OR"

Answer of Question no-15B
S
E

Ans: Alcohol can be used as fuel, It is a hydrocarbon, which is also known as Ethanol (C_2H_5OH). This is commonly called Alcohol. It has a pungent smell, It has boiling point about 351 K.

We know hydrocarbons are the source of energy, Coal and petroleum are also, carbon based, similar as petroleum Alcohol can be used as fuel. But the Petroleum is a natural fossil fuel. Alcohol by some of refinement some other changes can be used as fuel.



प्रश्न क्र. 16

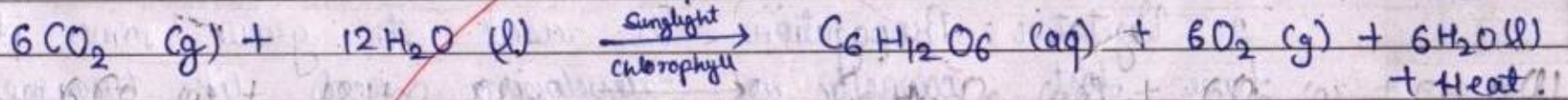
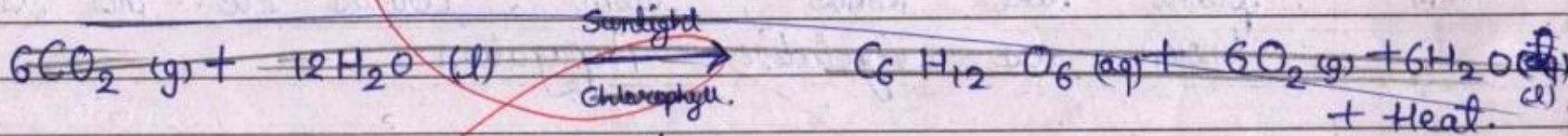
Question 16

"OR"

Answer of Question no 16.

Chemical reaction of Photosynthesis.

B
S
E



P.T.O.



प्रश्न क्र. 17

Question no 17.

Answer of Question no 17.

Ans/ Some plants also grow from the vegetative parts of plant like Roots, stem, leaves etc. This is known as vegetative propagation.

1) Vegetative propagation is used to grow some plants that have lost capacity of developing seeds like Orange, Orange, So these trees can also be grown by vegetative propagation.

2) Also, to get such plants that bear fruit and seed early, by vegetative propagation, this process can be helpful for growing that plants.

Hence, "Vegetative propagation is used to grow such plants that lost capacity to bear seeds". To get fruits earlier we grow plants with vegetative propagation.

B
S
E

ST-16M



प्रश्न क्र. 18

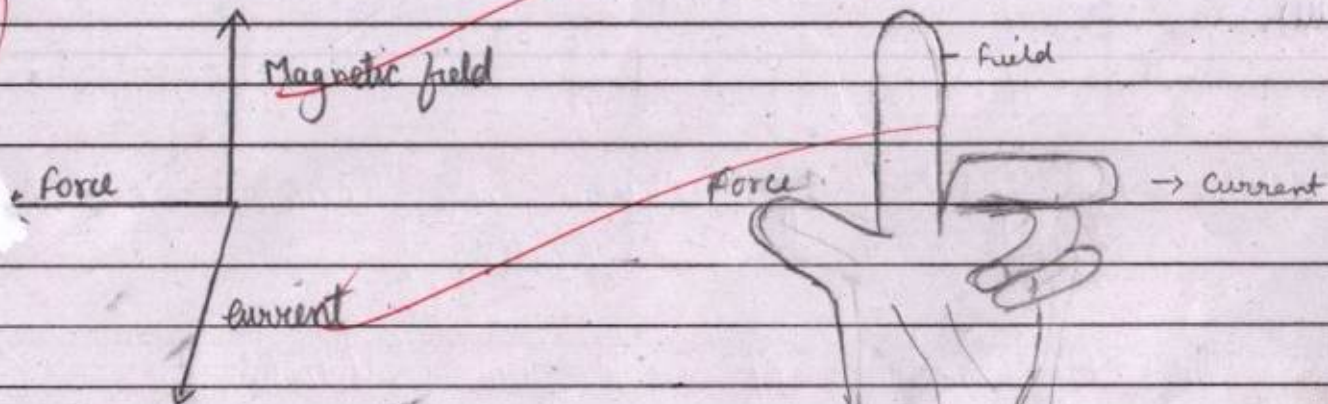
Answer of Question no. 18

'OR'

Fleming's left hand Rule

Ans = Fleming's left hand Rule :- Stretch your first finger, middle finger and thumb of your left hand, such that they are mutually perpendicular to each other. Then, the first finger shows the direction of Magnetic field lines, middle finger shows direction of current then the thumb will show the direction of force. This is called Fleming's left hand rule.

B
S
E





प्रश्न क्र. 19

Question no. 19

Answer no. 19

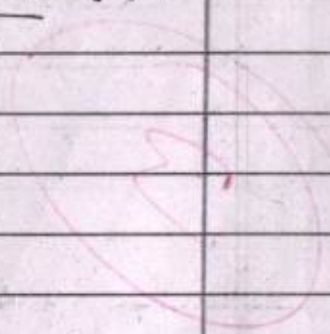
B
S
E

(i) liquid at room temperature =

(ii) Easily cut with knife =

(iii)

Continue ...





प्रश्न क्र. 19

Question no-19

"OR"

Answer of Question no-19.

B
S
E

(1) Minerals :- The substance that occurs naturally in the earth crust are called minerals.

(2) Ores :- Sometimes minerals mined from earth crust contain high percentage of particular metal, which will be profitably extracted, called Ores.
from it

(3) Gangue :- Ores mined from earth crust usually contain ~~minerals~~ with some impurities like sand, silt and other particles. These impurities are called Gangue.



P.T.O.

प्रश्न क्र 20

Question no. 20.

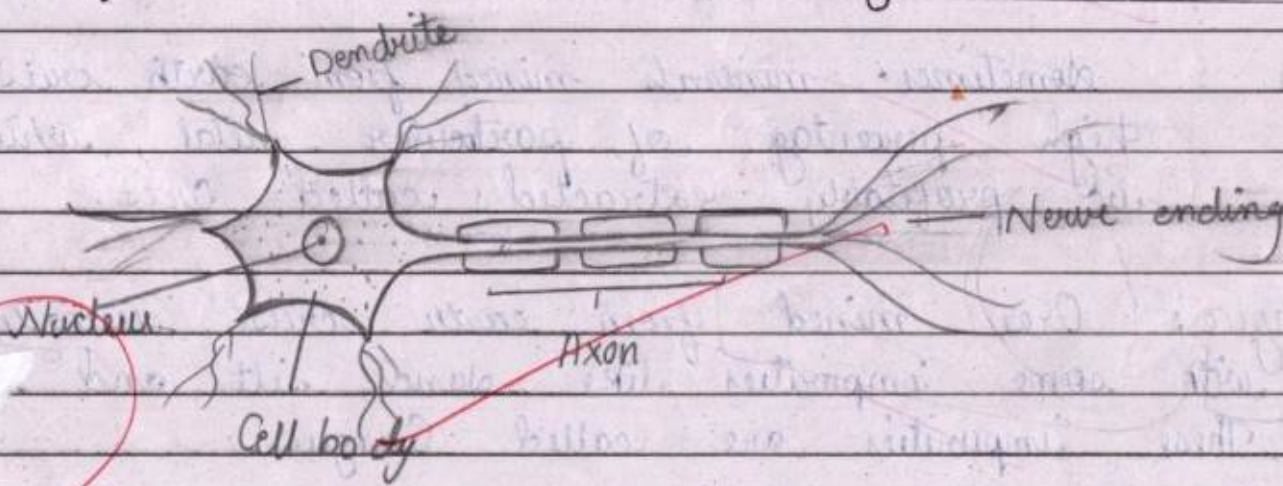
OR

Answer of Question no. 20.

~~Reflex arc~~

Structure of Neuron

B
S
E



The parts of Neuron are Nucleus, Cell body, Dendrite, Axon and Nerve ending.

The Organelles of cell are Mitochondria, Golgi apparatus, Nucleus, Cytoplasma, etc.

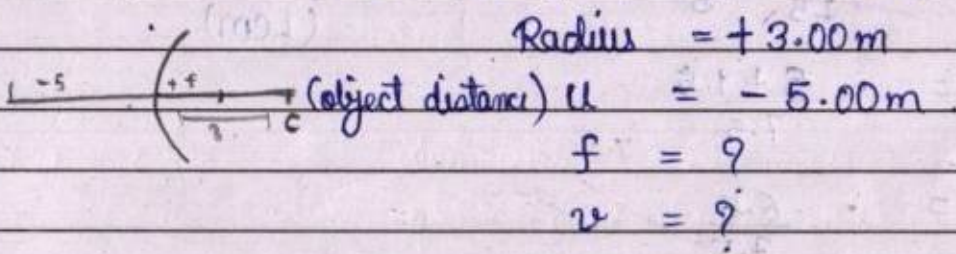


प्रश्न क्र. 91

Question no 21.

Answer of Question no 21.

Solution - we have, convex mirror



The image will be virtual and Erect.

Now, we know $f = \frac{R}{2}$

$$f = \frac{3}{2} = 1.5m.$$

Now, by mirror formula, $\frac{1}{v} + \frac{1}{u} = \frac{1}{f}$

B
S
E



प्रश्न क्र.

$$\Rightarrow \frac{1}{v} + \left(\frac{1}{-5}\right) = \frac{1}{1.5}$$

$$\Rightarrow \frac{1}{v} - \frac{1}{5} = \frac{1}{1.5}$$

$$\Rightarrow \frac{1}{v} = \frac{1}{1.5} + \frac{1}{5}$$

$$\Rightarrow \frac{1}{v} = \frac{5 + 1.5}{7.5}$$

$$\Rightarrow \frac{1}{v} = \frac{6.5}{7.5}$$

$$\Rightarrow v = \frac{7.5}{6.5}$$

$$v = 1.15 \text{ m.}$$

$$v = 1.15 \text{ m}$$

Now,

$$\text{magnification (m)} = \frac{-v}{u}$$

$$= \frac{-1.15}{-5}$$

$$= 0.23$$

B
S
E

www.vidyaloka.com

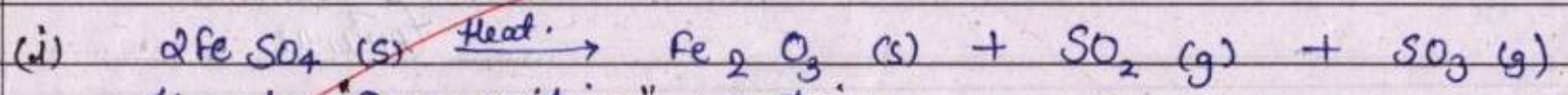
प्रश्न क्र.

Hence, the image of object will be virtual and erect, behind the mirror and larger by a factor of 0.23.

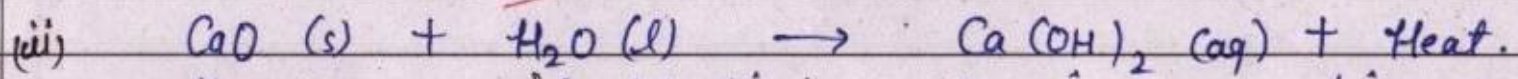
B
S
E

Question no. 22.

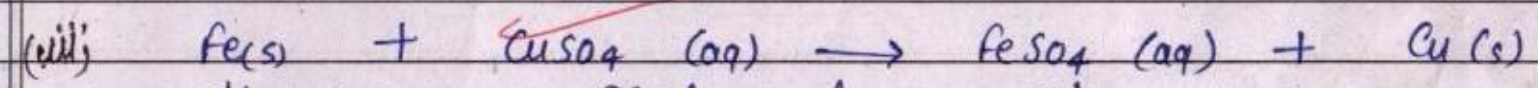
Answer of Question no. 22.



It is "Decomposition" reaction.



It is a "Combination" exothermic reaction.

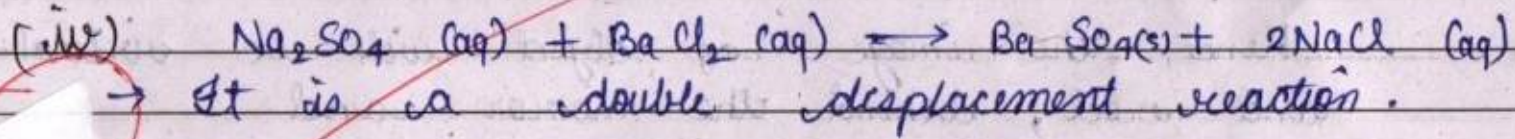


It is a Displacement reaction.

P.T.O



प्रश्न क्र.

B
S
EQuestion no - 23Answer no - 23.

Continue ...



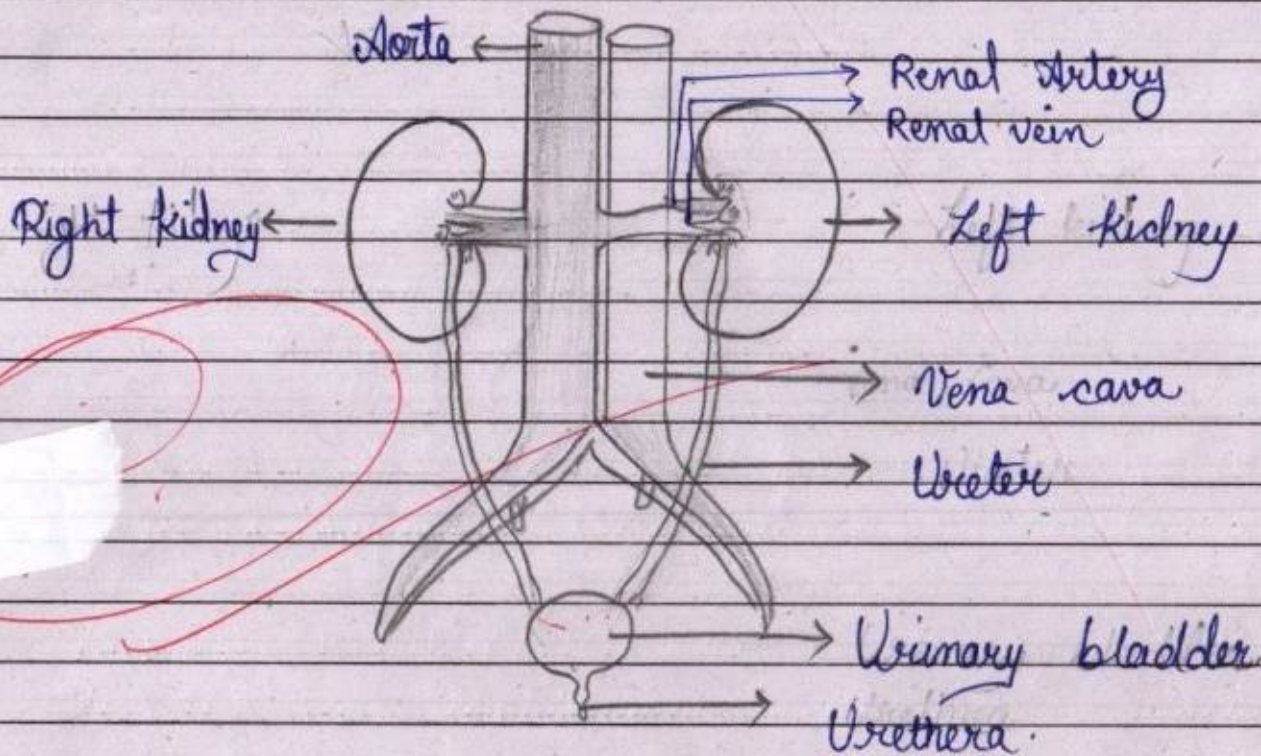
प्रश्न क्र.

Question no - 23.

Human Excretory System.

Answer of Question no 23.

B
S
E



Human Excretory System.